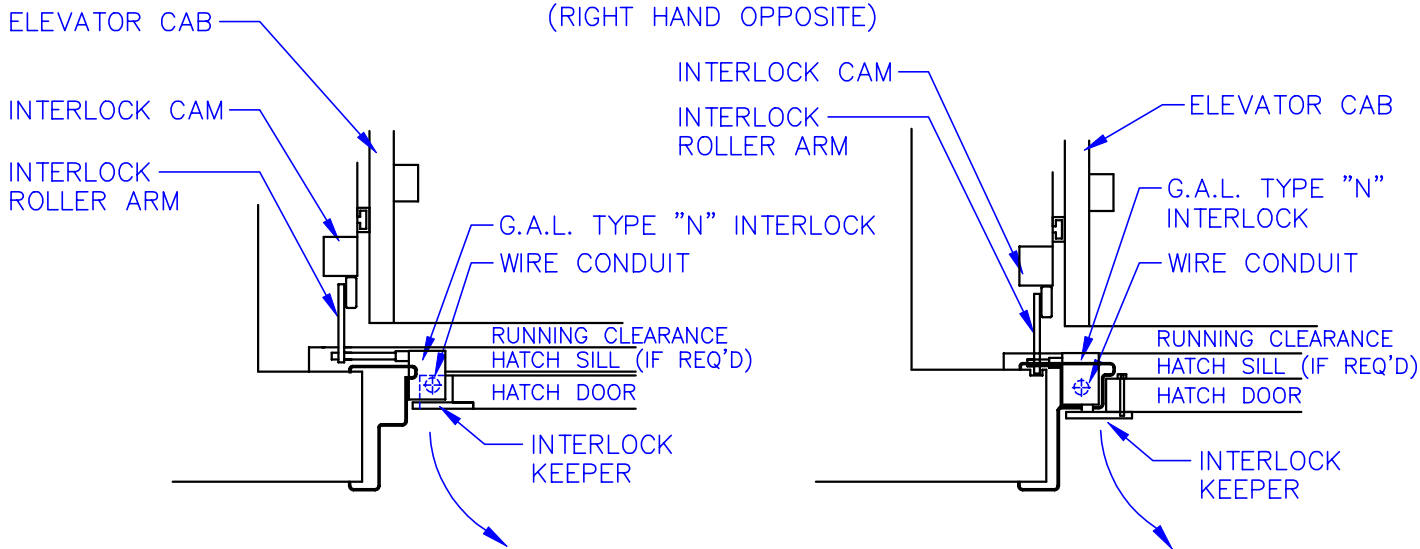


**LEFT HAND DOOR SWING SHOWN
(RIGHT HAND OPPOSITE)**



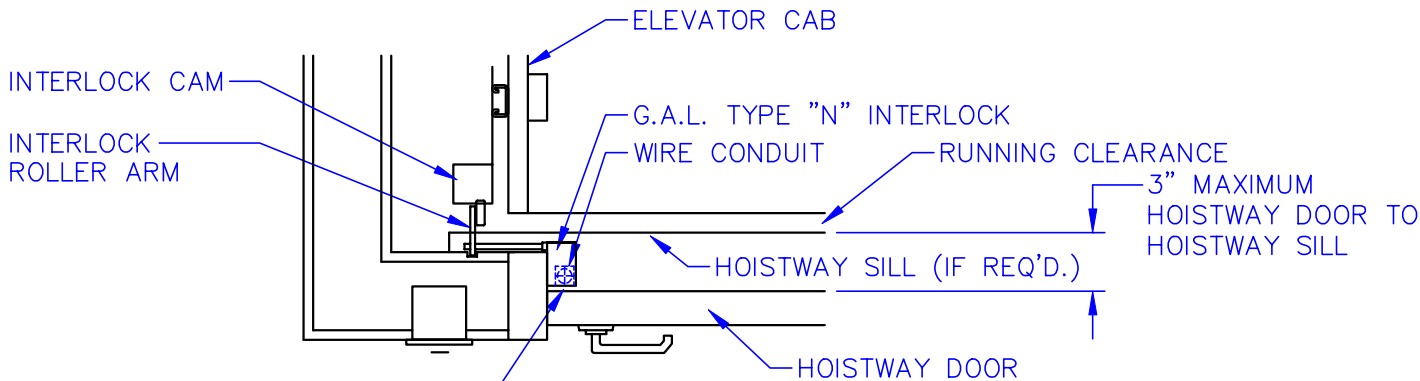
NOTE:
INTERLOCK KEEPER MUST BE PERMANENTLY ATTACHED TO HOISTWAY DOOR (THRU BOLT WITH BACKING PLATE OR EQUAL REQUIRED).

SURFACE MOUNTED LOCK

*REFER TO GAL. DRAWING M-7141-1A FOR MORE DETAIL

FLUSH MOUNTED LOCK

*REFER TO GAL. DRAWING M-7141-2A FOR MORE DETAIL



INTERLOCK KEEPER(M-14-2)

**ALTERNATE ARRANGEMENT FOR
SURFACE MOUNTED LOCK
FOR RESIDENTIAL APPLICATIONS ONLY**

NOTES:

- DUE TO OUR POLICY OF CONTINUOUS IMPROVEMENT AND EVOLVING CODE REQUIREMENTS, WE RESERVE THE RIGHT TO ALTER OR AMEND THESE DETAILS AND, AS SUCH, THEY DO NOT FORM PART OF ANY CONTRACT. CONTACT OUR ENGINEERING STAFF FOR APPLICATION DRAWINGS SPECIFIC TO YOUR PROJECT PRIOR TO COMMENCING CONSTRUCTION.



**HOISTWAY DOOR
INTERLOCK DETAIL
FOR MODELS
CMR-450,CMR-750,I-2000**

DATE: 08-08-01

FILE NAME: INT-LOCK