

HOISTWAY PLAN

4000# [1815 KG] CAPACITY

DIMENSIONS ARE BASED ON UP TO 70'-0" [21336] OF TRAVEL, CAR SPEED UP TO 100 FPM, REGULAR BI-PARTING HOISTWAY DOORS, & SINGLE SECTION POWERED CAR GATE. OTHER PLATFORM SIZES, CAPACITIES, & HIGHER TRAVEL AVAILABLE (CONSULT FACTORY).
 DOUBLE SECTION GATE: INSIDE CAB DEPTH WILL BE 4" LESS.

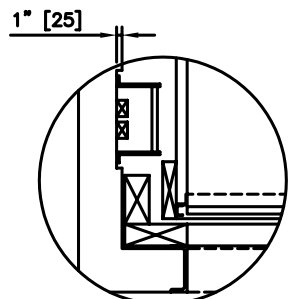


ELEVATOR SYSTEMS

2801 TOWNSHIP LINE ROAD, HATFIELD, PA 19440
 215-799-2900 • 1-800-962-3626 • FAX: 215-703-0347

NOTES:

- 1) DIMENSIONS IN [] ARE METRIC.
- 2) ALL DIMENSIONS ARE SUBJECT TO CHANGE WITHOUT NOTICE. CONFIRM WITH FACTORY.
- 3) ** 11" MINIMUM WITH 2002 AND ABOVE CODE AND NO NOTCHING



HOISTWAY NOTCH FOR PIT LADDER - 2002 CODE