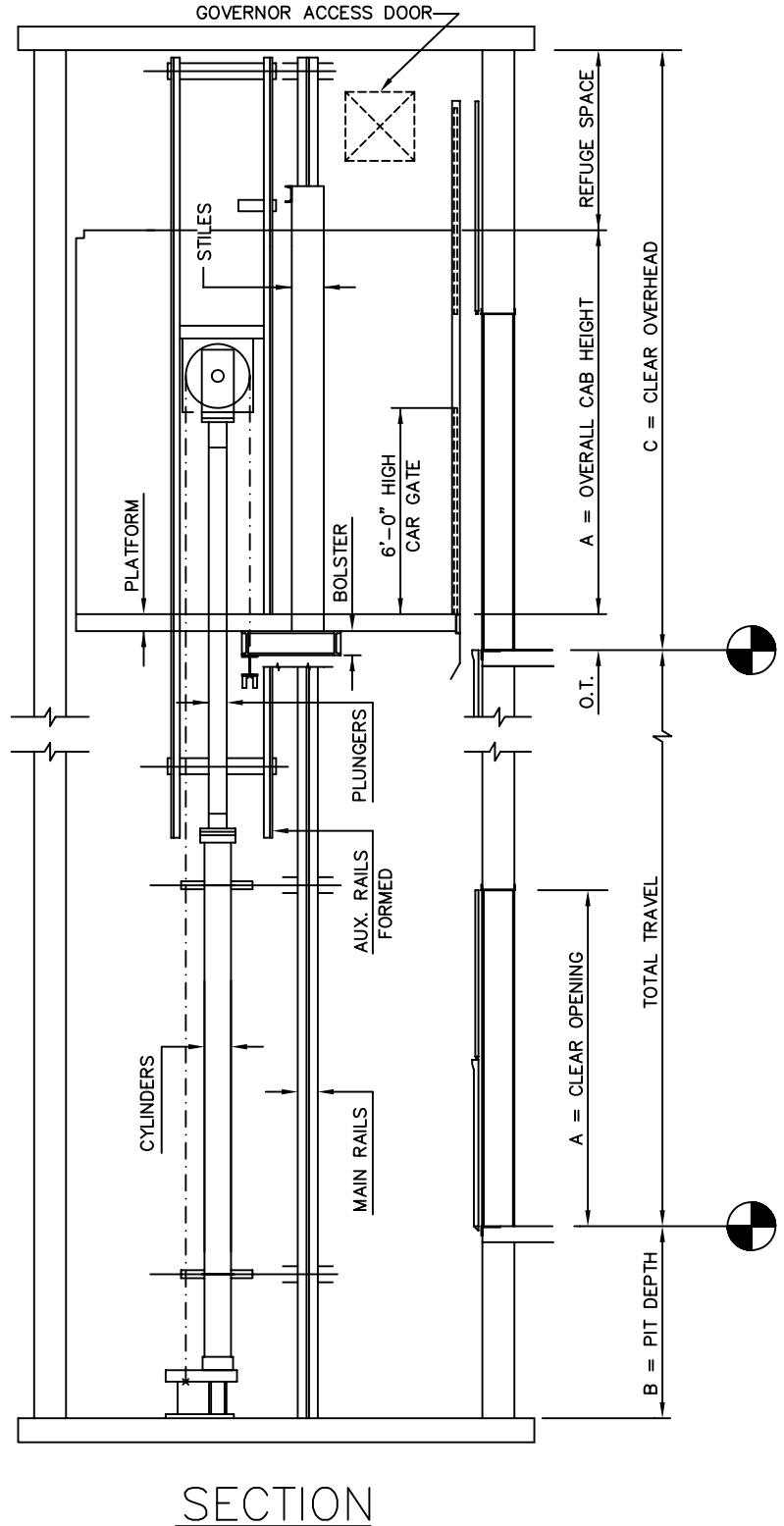
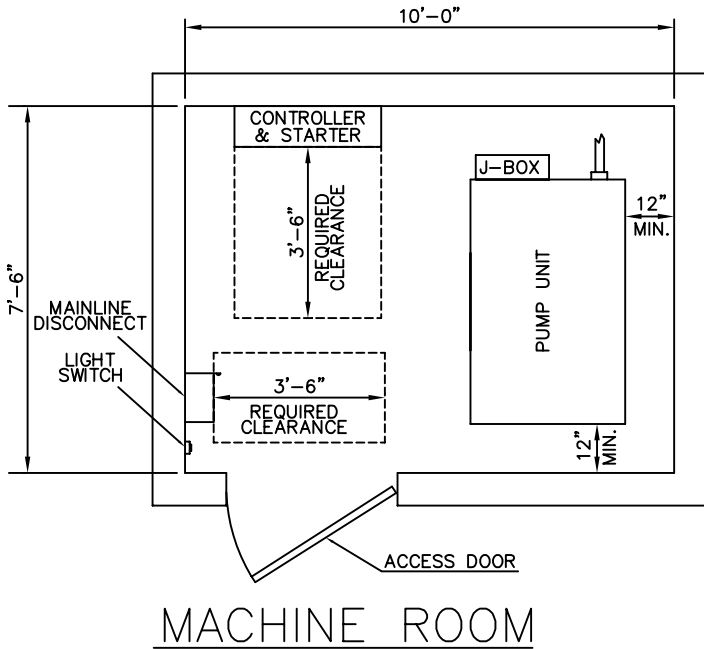


FREIGHT CLASS A, B OR C / DUAL ROPED

FDRF



NOTES:

- 1) ALL DIMENSIONS ARE SUBJECT TO CHANGE WITHOUT NOTICE. CONFIRM WITH FACTORY.
- 2) ADDITIONAL MACHINE ROOM EQUIPMENT MAY REQUIRE A LARGER MACHINE ROOM.
- 3) CLEARANCES MAY VARY PER STATE / CITY REQUIREMENTS. CHECK YOUR LOCAL CODES.
- 4) MINIMUM MACHINE ROOM HEIGHT IS 7'-0". CHECK YOUR LOCAL CODES.
- 5) CONSULT FACTORY FOR SPECIAL ARRANGEMENTS.
- 6) MACHINE ROOM IS SUGGESTED TO BE ADJACENT AT THE LOWEST LANDING, BUT CAN BE LOCATED REMOTE. REMOTE MACHINE ROOMS CAN AFFECT EQUIPMENT.

MACHINE ROOM BASED ON THE FOLLOWING CRITERIA:

- 1) ADJACENT M.R.
- 2) SPEED UP TO 125 FPM
- 3) TRAVEL UP TO 80'-0"
- 4) SEISMIC (PRV) PROVISIONS INCLUDED
- 5) 480V MAINLINE POWER
- 6) 8'-0" HIGH CAB
- 7) 80 STARTS/HOUR
- 8) CLASS A, B, & C: CAPACITY UP TO 8000#

* DEPENDING ON JOB SPECIFICATIONS, MULTIPLE POWER UNITS MAY BE REQUIRED, WHICH WILL REQUIRE A LARGER MACHINE ROOM. CONFIRM WITH FACTORY.

CEMCO LIFT

ELEVATOR SYSTEMS

2801 TOWNSHIP LINE ROAD, HATFIELD, PA 19440
 215-799-2900 • 1-800-962-3626 • FAX: 215-703-0347

SECTIONAL DIMENSIONS			
CAB & DOOR HEIGHT	PIT DEPTH	OVERHEAD	
A	B	C 6'-0" HIGH 1 SECTION GATE	C 6'-0" HIGH 2 SECTION GATE
7'-0"	4'-0"	13'-4"	11'-3"
8'-0"	4'-6"	14'-4"	12'-11"
9'-0"	5'-0"	15'-4"	14'-5"
10'-0"	5'-6"	16'-4"	15'-11"