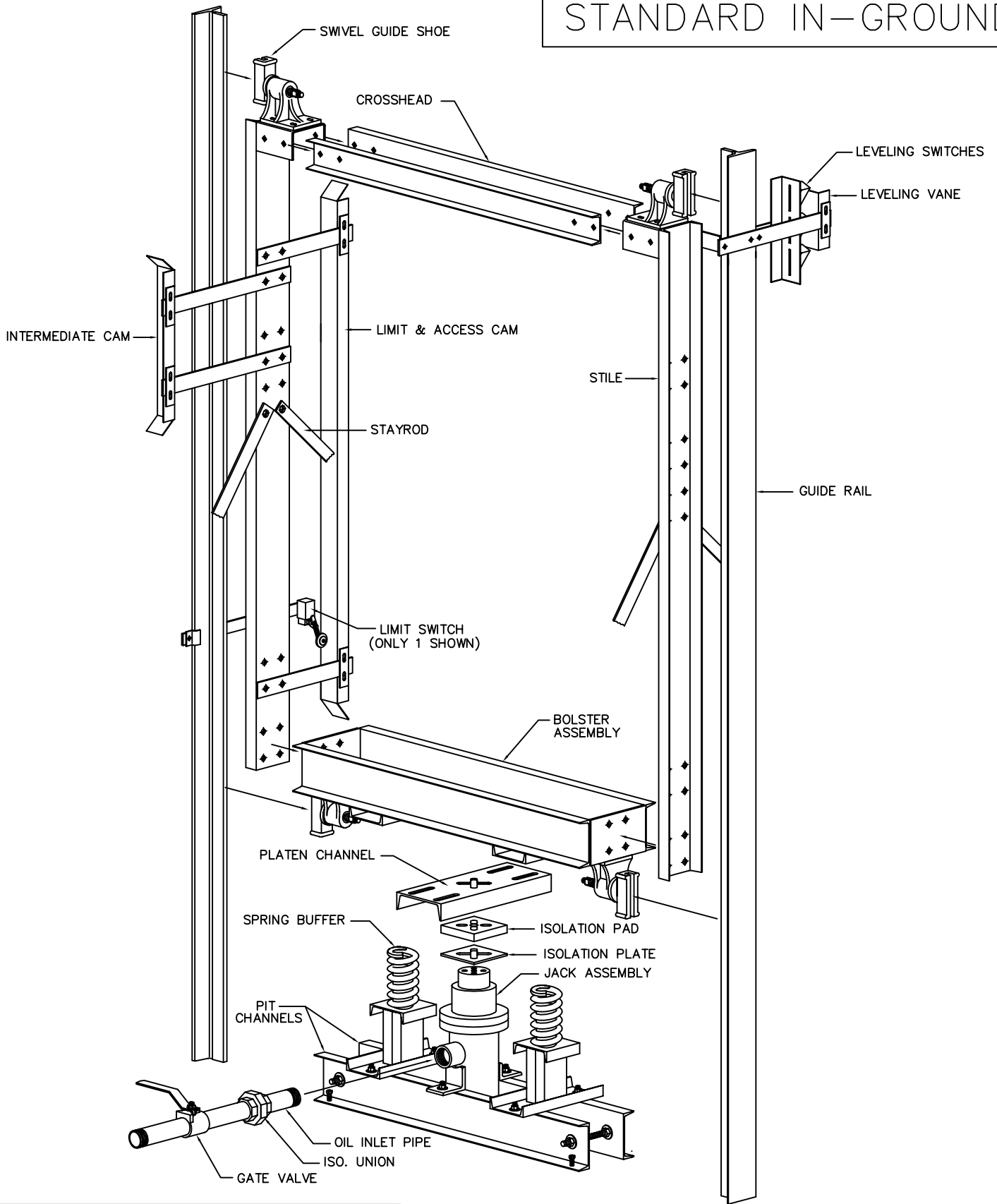


STANDARD IN-GROUND



ERECTOR NOTES:

- 1.) ACCURATELY MEASURE HOISTWAY SIZE, PIT DEPTH, CAR TRAVEL & CLEAR OVERHEAD, IF THESE DIMENSIONS ARE NOT AS SHOWN ON THE ELEVATOR LAYOUT DRAWING CALL CEMCOLIFT BEFORE PROCEEDING.
- 2.) AFTER PLUMBING OUT THE HOISTWAY, INSTALL PIT CHANNELS. POSITION JACK ASSEMBLY ON PIT CHANNELS. MAKE SURE JACK IS PLUMB THEN CLIP IN POSITION.
- 3.) INSTALL GUIDE RAILS. NOTE THE LOCATION OF THE RAILS FROM THE ELEVATOR LAYOUT. A GOOD RAIL STACK WILL MAKE THE INSTALLATION RUN SMOOTHLY.
- 4.) OIL LINE TO BE ARRANGED ACCORDING TO THE JOB SITES EXISTING CONDITIONS. GATE VALVES, ISO UNIONS, PIPE RUPTURE VALVES AND RELATED EQUIPMENT ARE OPTIONAL FROM CEMCOLIFT AND MAY NOT BE INCLUDED.
- 5.) PROCEED WITH THE CAR FRAME INSTALLATION AS SHOWN IN THE ABOVE NOTED DRAWING.
- 6.) AFTER CAR FRAME IS INSTALLED & BEFORE CAB IS IN PLACE ADJUST GUIDE SHOES IN ACCORDANCE WITH THE INSTRUCTIONAL SHEET PROVIDED IN THE INFORMATION PACKET SUPPLIED WITH EACH JOB.
- 7.) ALL INSTRUCTIONS PROVIDED HERE ARE BASED ON OUR STANDARD PASSENGER CAR FRAME INSTALLATION. ANY NON-STANDARD CONDITIONS MAY REQUIRE CUSTOM DESIGN FEATURES.

CEMCOLIFT

ELEVATOR SYSTEMS

2801 TOWNSHIP LINE ROAD, HATFIELD, PA 19440
 215-799-2900 • 1-800-962-3626 • FAX: 215-703-0347