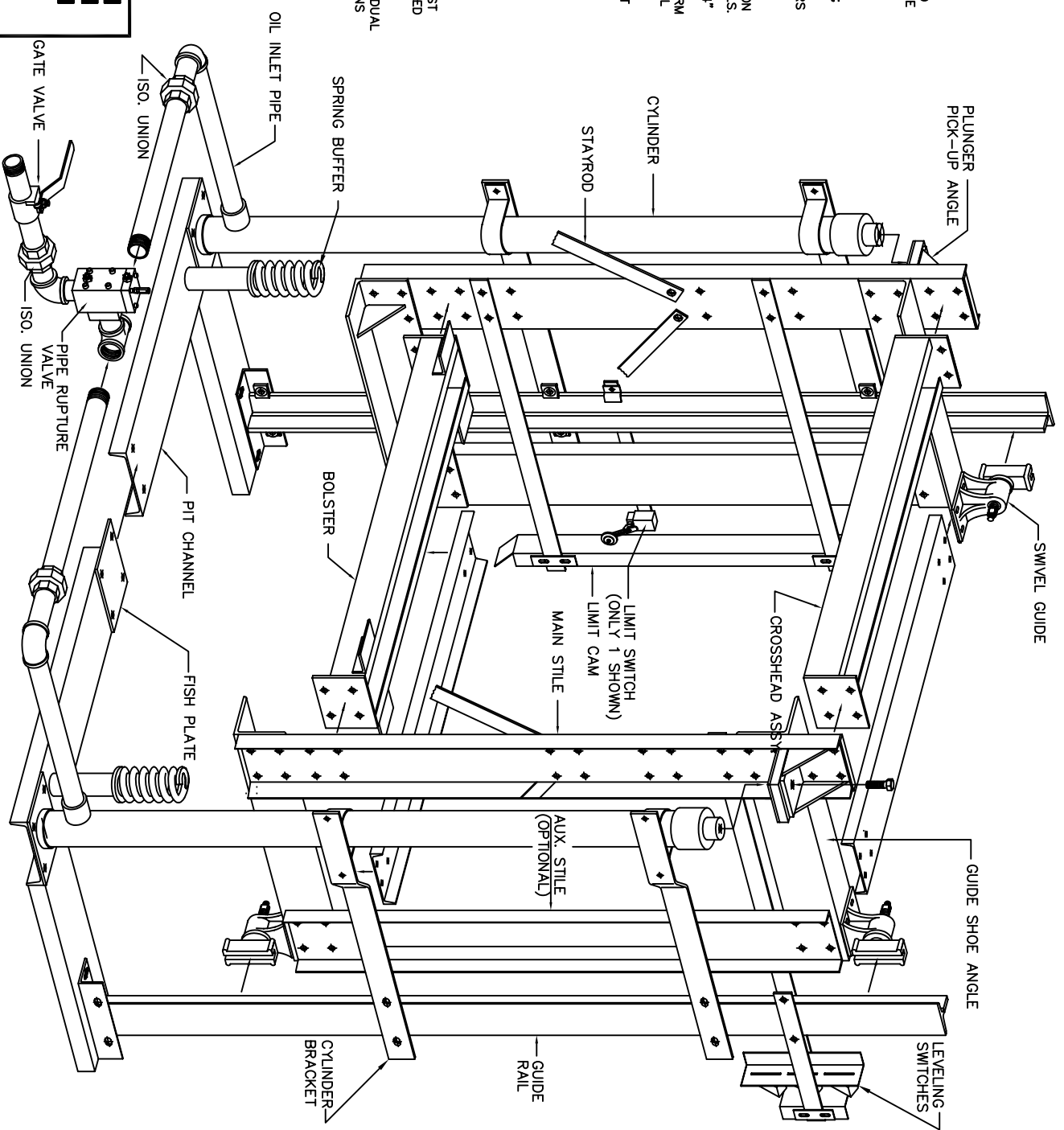


STANDARD DUAL HOLELESS

ERECTOR NOTES:

- 1) ACCURATELY MEASURE HOISTWAY SIZE, PIT DEPTH, CAR TRAVEL AND CLEAR OVERHEAD. IF THESE DIMENSIONS ARE NOT AS SHOWN ON THE ELEVATOR LAYOUT DRAWING CALL CEMCOLIFT BEFORE PROCEEDING.
- 2) AFTER PLUMBING OUT THE HOISTWAY, INSTALL PIT CHANNELS. NOTE THAT PIT CHANNELS ARE FURNISHED IN TWO SECTIONS WITH A 8" X 10" X 3/8" THICK FISHPLATE FOR BOLTING THE SECTIONS TOGETHER. THE PIT CHANNEL IS PRE-DRILLED TO ACCEPT THE 8" X 10" X 3/8" THICK PLATE LOCATED AT THE BOTTOM OF THE CYLINDERS. IT IS IMPORTANT TO MAINTAIN THE CL TO CL DIMENSION OF THE CYLINDERS AS SHOWN ON THE GENERAL LAYOUT.
- 3) INSTALL GUIDE RAILS. NOTE THE LOCATION OF THE RAILS FROM THE ELEVATOR LAYOUT. A GOOD RAIL STACK WILL MAKE THE INSTALLATION RUN SMOOTHLY SINCE THE CYLINDERS ARE MOUNTED FROM THE RAILS.
- 4) THE CL TO CL DIMENSION OF THE CYLINDERS IS PLATFORM + 8 3/4" FOR 4 1/2" & 5 9/16" DIA. CYLINDERS & 9 3/4" FOR 6 5/8" CYLINDERS. THE DISTANCE BETWEEN GUIDE RAILS (D.B.G.) IS PLATFORM WIDTH + 3 1/4". IF THESE DIMENSIONS CANNOT BE MAINTAINED CALL CEMCOLIFT BEFORE PROCEEDING!
- 5) THE CYLINDER MOUNTING BRACKETS ARE DESIGNED TO ASSURE THAT THE CL TO CL OF THE CYLINDERS WILL BE MAINTAINED FROM THE GUIDE RAILS. THIS IS WHY IT IS IMPORTANT TO HAVE AN ACCURATE RAIL INSTALLATION.
- 6) OIL LINE TO BE ARRANGED ACCORDING TO THE JOB SITES EXISTING CONDITIONS. GATE VALVES, ISO UNIONS, PIPE RUPTURE VALVES AND RELATED EQUIPMENT ARE OPTIONAL FROM CEMCOLIFT AND MAY NOT BE INCLUDED.
- 7) GUIDE SHOE ANGLE TO BE WELDED TO THE CROSSHEAD AT THE DISCRETION OF THE ENGINEERING DEPARTMENT.
- 8) AFTER CAR FRAME IS INSTALLED & BEFORE CAB IS IN PLACE ADJUST GUIDE SHOES IN ACCORDANCE WITH THE INSTRUCTION SHEET PROVIDED IN THE INFORMATIONAL PACKET SUPPLIED WITH EACH JOB.
- 9) ALL INSTRUCTIONS PROVIDED HERE ARE BASED ON OUR STANDARD DUAL HOLELESS CAR FRAME INSTALLATION. ANY NON STANDARD CONDITIONS MAY REQUIRE CUSTOM DESIGN FEATURES.



CEMCO LIFT

ELEVATOR SYSTEMS

2801 TOWNSHIP LINE ROAD, HATFIELD, PA 19440
 215-799-2900 • 1-800-962-3626 • FAX: 215-703-0347