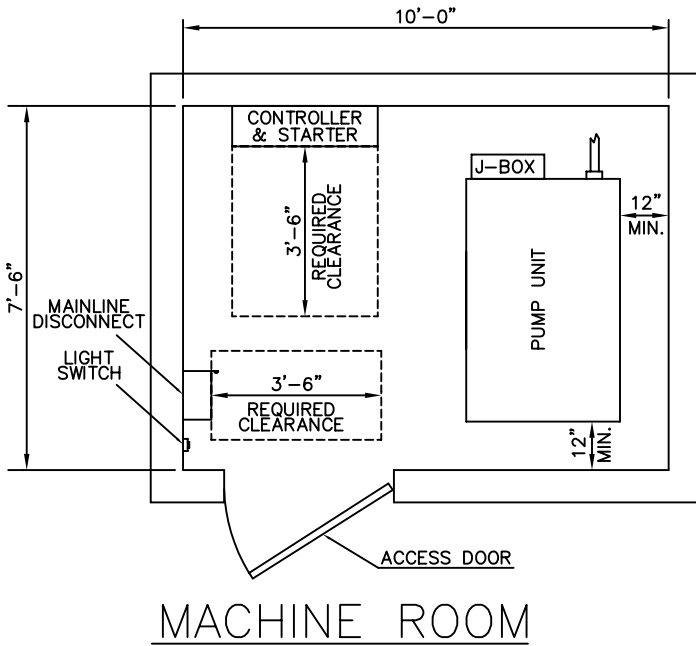


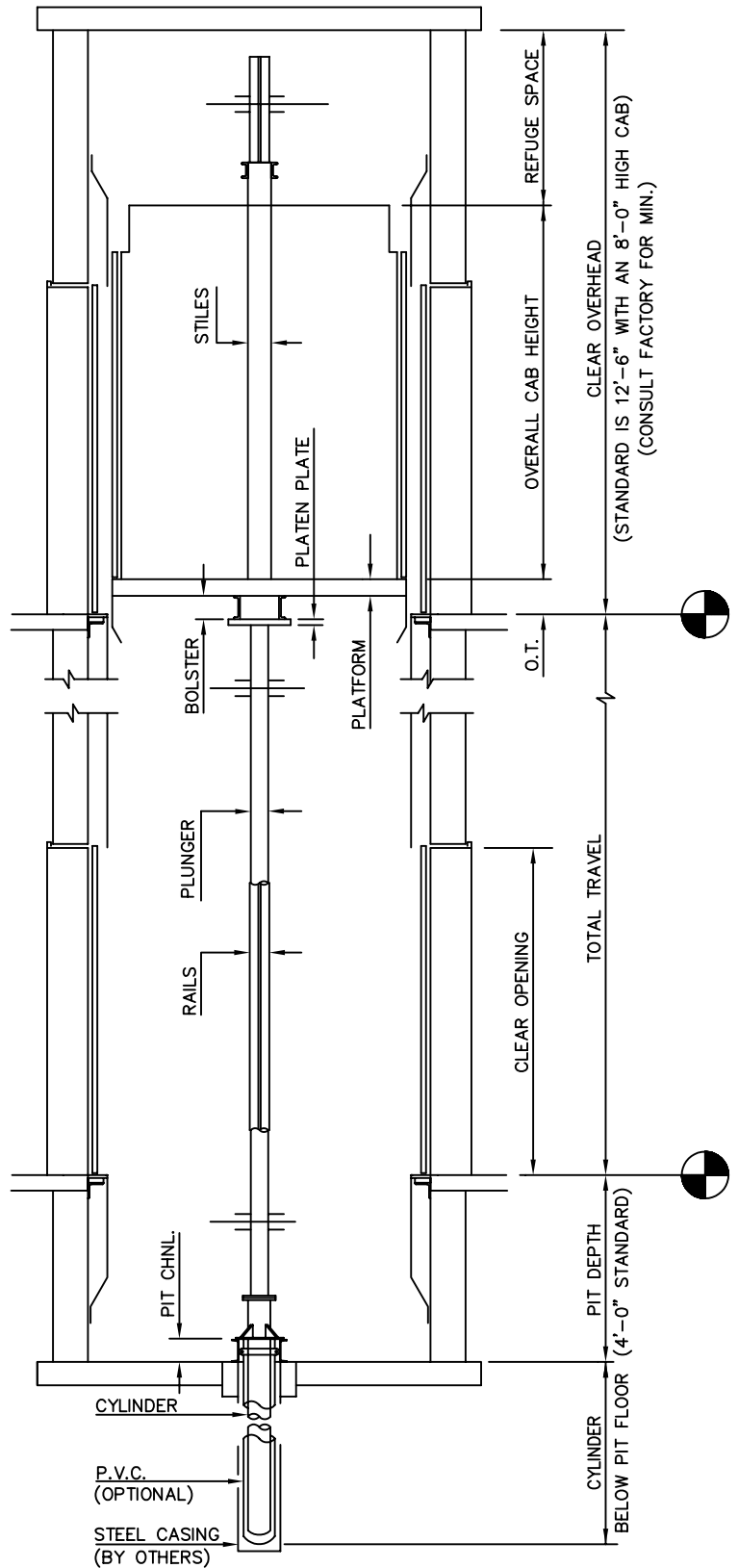
PASSENGER / SERVICE – STANDARD IN-GROUND



MACHINE ROOM

NOTES:

- 1) ALL DIMENSIONS ARE SUBJECT TO CHANGE WITHOUT NOTICE. CONFIRM WITH FACTORY.
- 2) ADDITIONAL MACHINE ROOM EQUIPMENT MAY REQUIRE A LARGER MACHINE ROOM.
- 3) CLEARANCES MAY VARY PER STATE / CITY REQUIREMENTS. CHECK YOUR LOCAL CODES.
- 4) MINIMUM MACHINE ROOM HEIGHT IS 7'-0". CHECK YOUR LOCAL CODES.
- 5) CONSULT FACTORY FOR SPECIAL ARRANGEMENTS.
- 6) MACHINE ROOM IS SUGGESTED TO BE ADJACENT AT THE LOWEST LANDING, BUT CAN BE LOCATED REMOTE. REMOTE MACHINE ROOMS CAN AFFECT EQUIPMENT.



SECTION

CEMCO LIFT
ELEVATOR SYSTEMS

2801 TOWNSHIP LINE ROAD, HATFIELD, PA 19440
215-799-2900 • 1-800-962-3626 • FAX: 215-703-0347