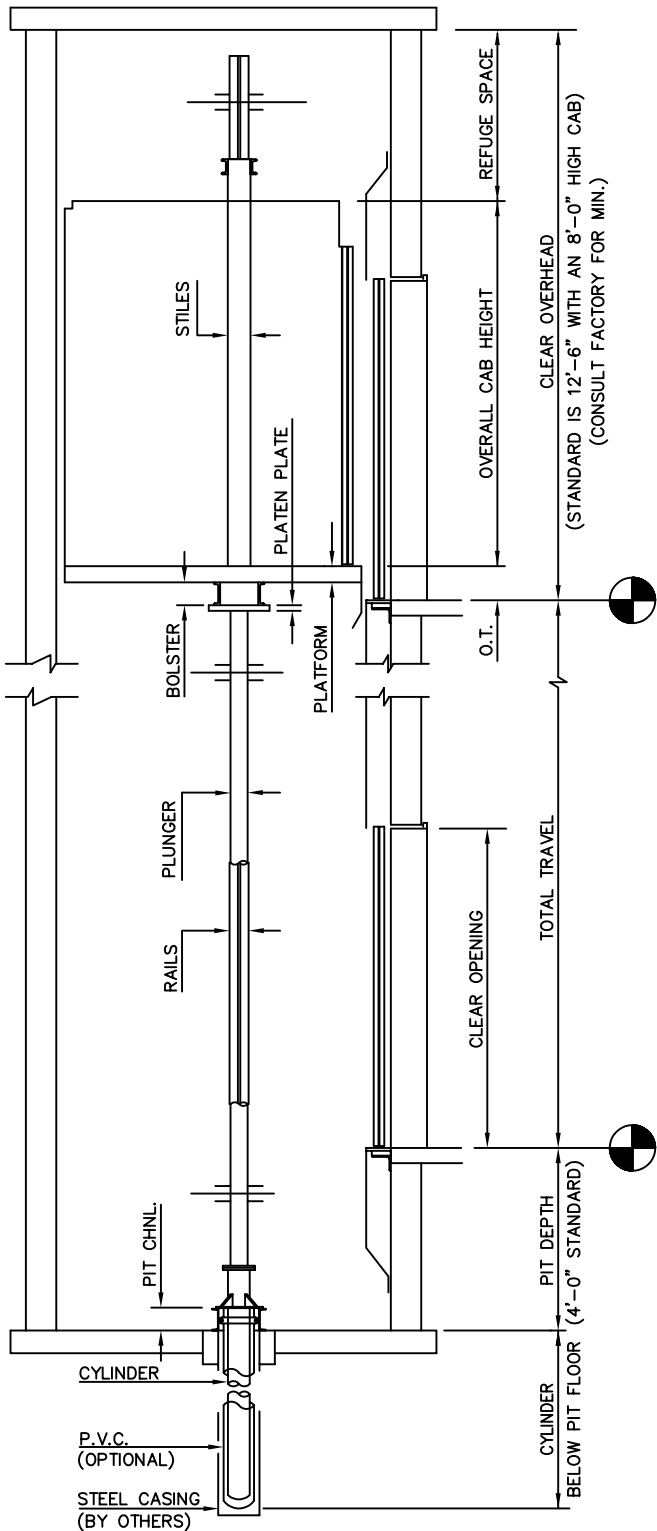
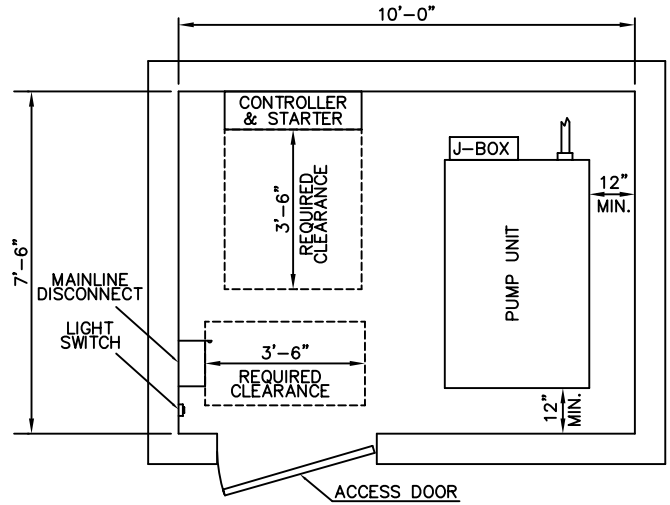


# PASSENGER / SERVICE – STANDARD IN-GROUND

IG2SFT



SECTION

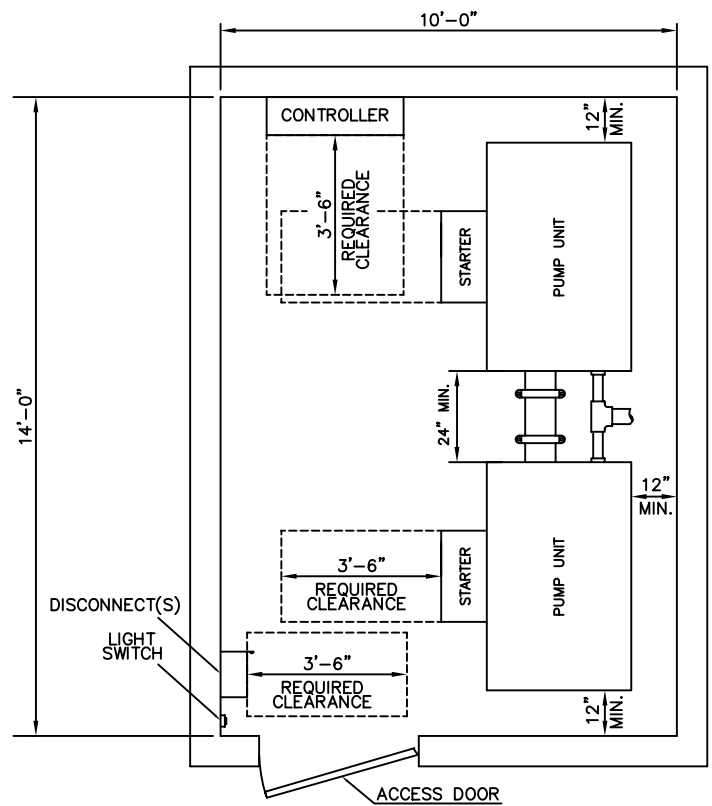


MACHINE ROOM #1

SINGLE POWER UNIT MACHINE ROOM CAN BE USED ON PROJECTS AT:

1. 6000 LB CAPACITY – UP TO 70'-0" TRAVEL – 115 FPM SPEED OR LESS
2. 7000-8000 LB CAPACITY – UP TO 70'-0" TRAVEL – 100 FPM SPEED OR LESS
3. 9000-10000 LB CAPACITY – UP TO 70'-0" TRAVEL – 85 FPM SPEED OR LESS

\* JOB SPECIFIC REQUIREMENTS CAN IMPACT M.R. SIZE.



MACHINE ROOM #2

TANDEM POWER UNIT MACHINE ROOM USED ON PROJECTS EXCEEDING CRITERIA FOR SINGLE UNIT

**NOTES:**

- 1) ALL DIMENSIONS ARE SUBJECT TO CHANGE WITHOUT NOTICE. CONFIRM WITH FACTORY.
- 2) ADDITIONAL MACHINE ROOM EQUIPMENT MAY REQUIRE A LARGER MACHINE ROOM.
- 3) CLEARANCES MAY VARY PER STATE / CITY REQUIREMENTS. CHECK YOUR LOCAL CODES.
- 4) MINIMUM MACHINE ROOM HEIGHT IS 7'-0". CHECK YOUR LOCAL CODES.
- 5) CONSULT FACTORY FOR SPECIAL ARRANGEMENTS.
- 6) MACHINE ROOM IS SUGGESTED TO BE ADJACENT AT THE LOWEST LANDING, BUT CAN BE LOCATED REMOTE. REMOTE MACHINE ROOMS CAN AFFECT EQUIPMENT.



**ELEVATOR SYSTEMS**

2801 TOWNSHIP LINE ROAD, HATFIELD, PA 19440  
 215-799-2900 • 1-800-962-3626 • FAX: 215-703-0347