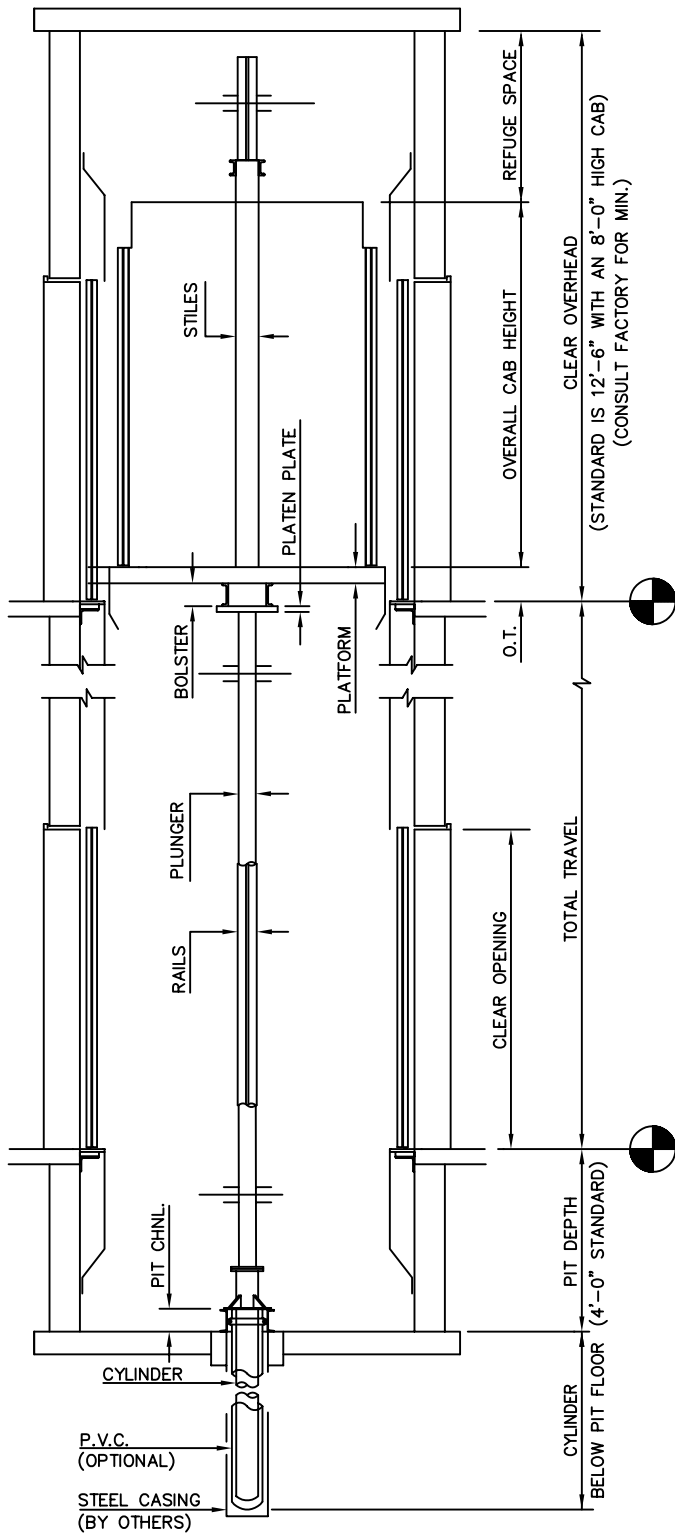
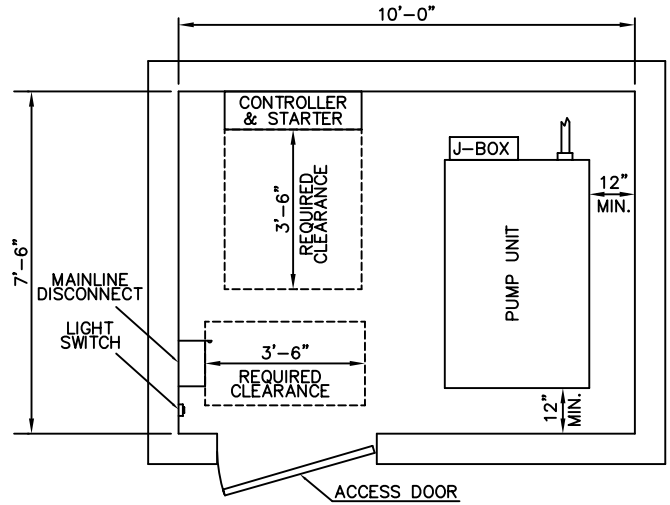


PASSENGER / SERVICE – STANDARD IN-GROUND

IG2SFRT



SECTION

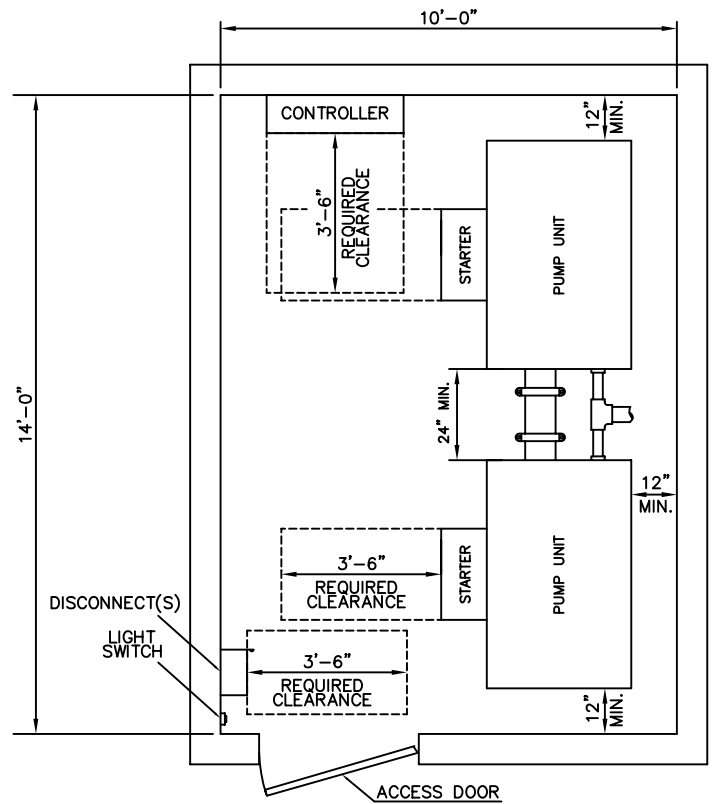


MACHINE ROOM #1

SINGLE POWER UNIT MACHINE ROOM CAN BE USED ON PROJECTS AT:

1. 6000 LB CAPACITY – UP TO 70'-0" TRAVEL – 115 FPM SPEED OR LESS
2. 7000-8000 LB CAPACITY – UP TO 70'-0" TRAVEL – 100 FPM SPEED OR LESS
3. 9000-10000 LB CAPACITY – UP TO 70'-0" TRAVEL – 85 FPM SPEED OR LESS

* JOB SPECIFIC REQUIREMENTS CAN IMPACT M.R. SIZE.



MACHINE ROOM #2

TANDEM POWER UNIT MACHINE ROOM USED ON PROJECTS EXCEEDING CRITERIA FOR SINGLE UNIT

NOTES:

- 1) ALL DIMENSIONS ARE SUBJECT TO CHANGE WITHOUT NOTICE. CONFIRM WITH FACTORY.
- 2) ADDITIONAL MACHINE ROOM EQUIPMENT MAY REQUIRE A LARGER MACHINE ROOM.
- 3) CLEARANCES MAY VARY PER STATE / CITY REQUIREMENTS. CHECK YOUR LOCAL CODES.
- 4) MINIMUM MACHINE ROOM HEIGHT IS 7'-0". CHECK YOUR LOCAL CODES.
- 5) CONSULT FACTORY FOR SPECIAL ARRANGEMENTS.
- 6) MACHINE ROOM IS SUGGESTED TO BE ADJACENT AT THE LOWEST LANDING, BUT CAN BE LOCATED REMOTE. REMOTE MACHINE ROOMS CAN AFFECT EQUIPMENT.



ELEVATOR SYSTEMS

2801 TOWNSHIP LINE ROAD, HATFIELD, PA 19440
 215-799-2900 • 1-800-962-3626 • FAX: 215-703-0347